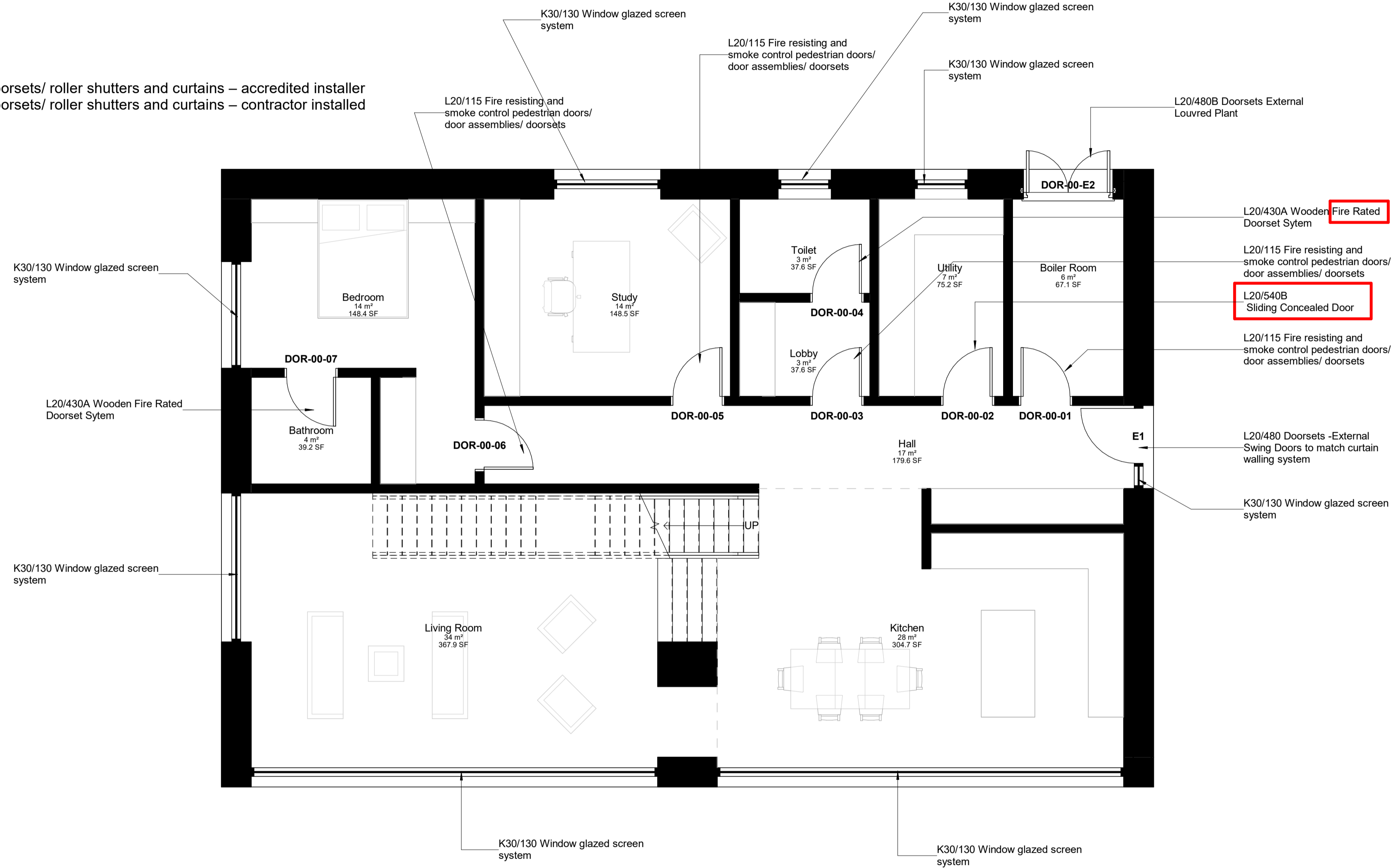


- L20/110 Evidence of performance
- L20/112 Timber procurement
- L20/115 Fire resisting and smoke control pedestrian doors/ door assemblies/ doorsets
- L20/120 Non fire resisting pedestrian doors/ door assemblies/ doorsets
- L20/150 Site dimensions
- L20/170 Control samples **samples**
- L20/280 Wooden Doors in Glazed Screens
- L20/430 Wood doorsets - Solid Core Laminate Finish
- L20/430A Wooden **Fire Rated** Doorset Sytem
- L20/435 Wood Doorsets - to risers
- L20/450 Framed Glazed Doors (internal)
- L20/480 Doorsets - External Swing Doors to match curtain walling system
- L20/480A Doorsets External Access/Egress Door
- L20/480B Doorsets External (to Plant rm)
- L20/520 Sliding Doors
- L20/520A Main Entrance Sliding Door - Outer Leaf
- L20/520B Main Entrance Sliding Door - Inner Leaf
- L20/630A Hatches For Roof Access (Standard, for ladder)
- L20/630B Hatches For Roof Access (Oversized, for stair access)
- L20/710 Protection of components
- L20/730 Priming/ sealing
- L20/750 Fixing **Mistake** doorsets
- L20/760 Building in
- L20/770 Damp proof courses associated with built-in wood frames
- L20/790 Fixing of wood frames
- L20/809 Fire resisting and smoke control doors/ door assemblies/ doorsets/ roller shutters and curtains – accredited installer
- L20/810 Fire resisting and smoke control doors/ door assemblies/ doorsets/ roller shutters and curtains – contractor installed
- L20/820 Sealant joints
- L20/830 Fixing ironmongery generally
- L20/840 Fixing ironmongery to fire resisting door assemblies
- L20/850 Location of hinges
- L20/860 Installation of emergency exit devices



Rev	Description	Date
P02	Drawing revised	27-11-2024
P01	Drawing revised	15-11-2024

00 Ground Floor Plan - Sheet
1001-SHL-P1-00-DR-A-0001 COPY 001
 1 : 50

Share&Log

CLIENT Share&Log		
TITLE Ground Floor Plan		
PROJECT Sample Project		
STATUS S2 Suitable for information		
DRAWN BY Author	DATE 01/23/07	
PROJECT NUMBER 1001	SCALE (@ A1) 1 : 50	SIZE A1
DRAWING NUMBER 2001-SHL-P1-00-DR-A-0001	REV P02	